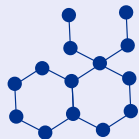
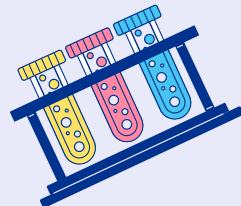
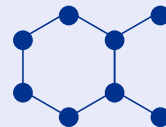
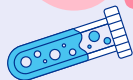




White Oak Elementary 2024



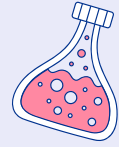
Science Fair



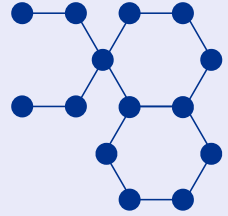


Key Details

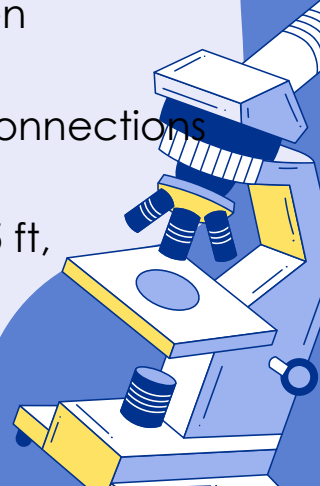
- Complete interest form by February 19.
- **MUST FOLLOW GUIDELINES**
- March 14th 5:30-7:00 is the fair



Guidelines



- We are **encouraging family participation**
- All projects must follow White Oak Elementary TREK expectations, and WCPSS student conduct guidelines
- No animals (can photograph)
- No chemicals or liquids in open containers – NO VOLCANOES EXPLODING
- No foul-smelling or allergy provoking substances such as molds in open containers
- No wiring hazards, such as frayed insulation, exposed wires or loose connections
- Fair will not provide access to electricity, gas or water
- Display board should not exceed width: 3.5 ft, depth: 2.5 ft., height 5 ft,
- Make sure display board is sturdy
- Must remove project at the end of the expo by 7pm



Where do I begin?

The first step in the process is picking your science category and posing a question. Your question should be clear, safe, quantifiable (it can be measured in some way), and related to one of the following topics:

- Biological Sciences
- Earth Sciences
- Environmental Sciences
- Physical Sciences
- Behavioral, Social, and Health Sciences

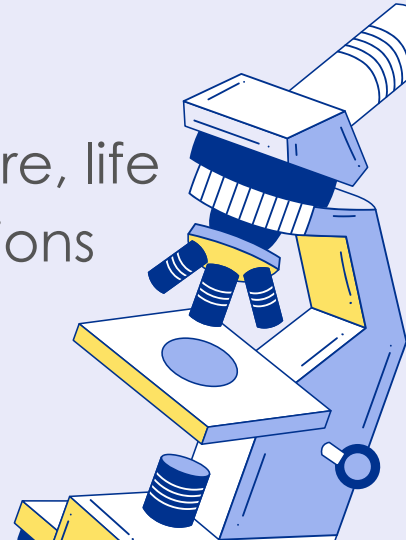


Biological Sciences

Projects that involve living things or once living things.

Examples:

- Plants
- Animals - structure, life cycles, adaptations
- Human biology
- Genetics





Earth Sciences

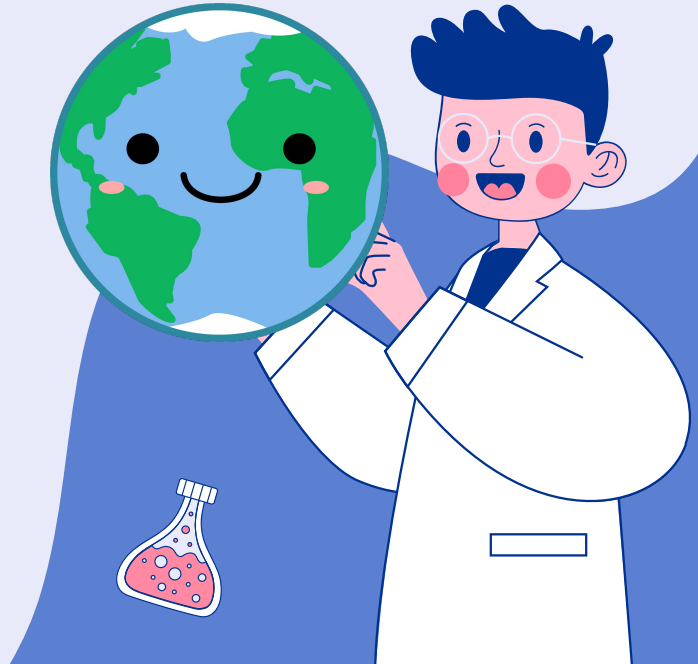
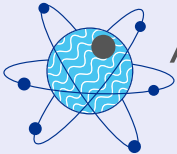


Projects that involve the Earth and physical phenomena.

Examples:

- Weather/Atmosphere
- Rocks/Minerals
- Landforms
- Water

Astronomy

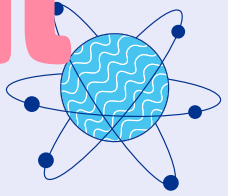
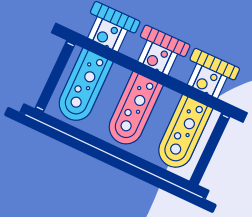
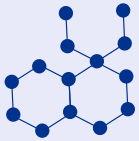
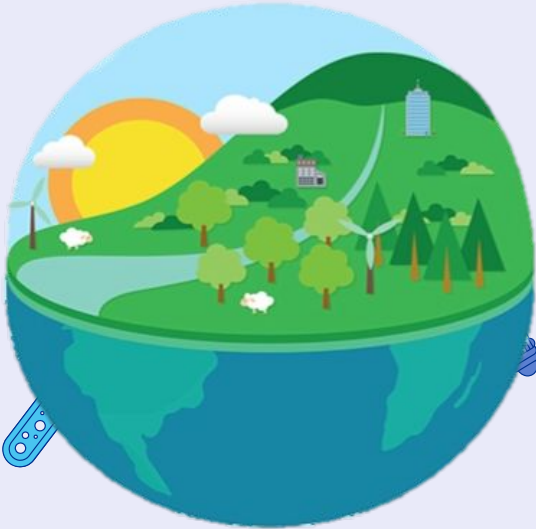


Environmental Sciences

Projects that involve the environment and the relationship of living things together in their environment.

Examples:

- Organisms in their habitat
- Relationships between organisms
- How people affect the environment
- Pollution
- Recycling




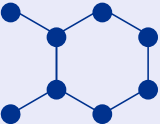



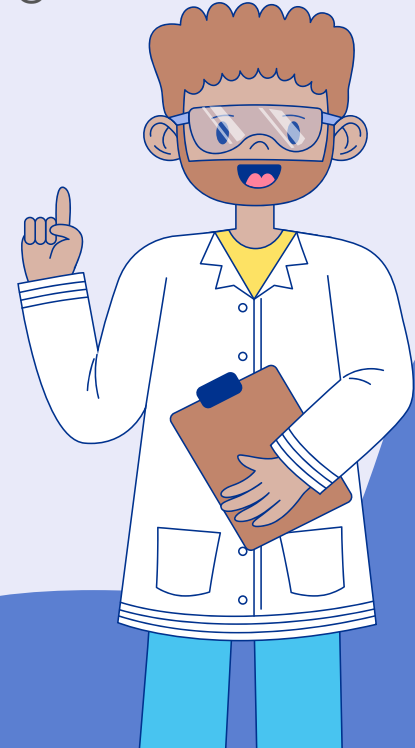
Physical Sciences

Projects that involve non-living things.



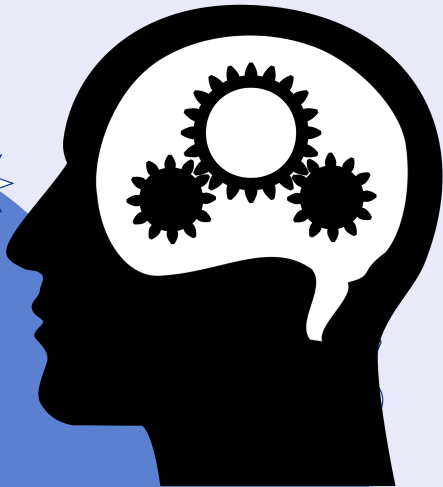
Examples:

- Math
 - Computer/Technology
 - Engineering
 - Chemistry
 - Food Science
 - Rube Goldberg Machines
 - Music
 -  Physics
 - Sports
- 
- 
- 



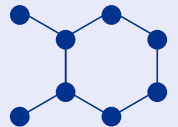
Behavioral, Social, & Animal Sciences

✧ Projects that involve the ways people and/or animals behave, perception studies, opinions



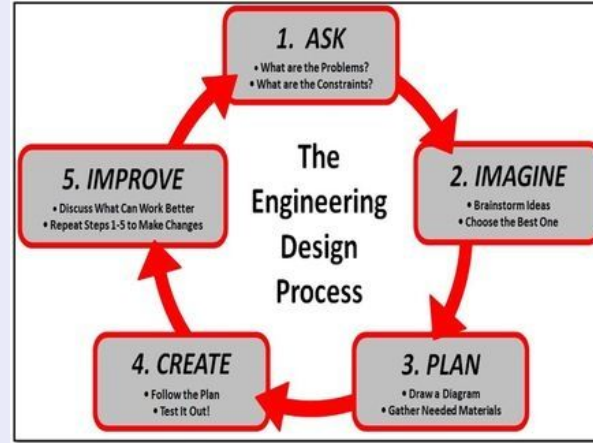
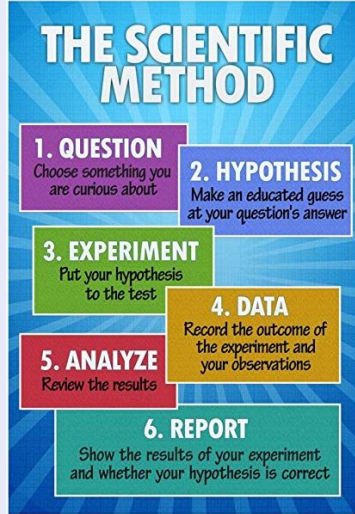
Examples:

- Health
- Psychology
- Product testing/Taste Testing
- Human Behavior
- Animal Behavior
- Sociology ✧





Scientific Method vs. Engineering Design




CLICK HERE






Questions

If you have any questions, feel free to
email the Science Fair Committee at
soverton@wcpss.net



I will be checking the email often and
getting back to any and all questions
ASAP.



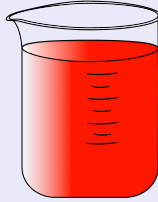
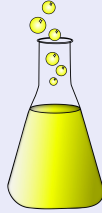
**Good luck, get creative, and most importantly
HAVE FUN!**



Resources

Science Buddies

<https://sciencebuddies.org>

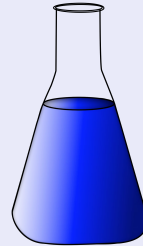
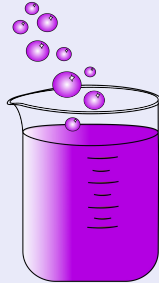


We Have Kids

<https://wehavekids.com/education/How-to-do-a-Great-Science-Fair-Project-and-Board>

Education.com

<https://www.education.com/science-fair/>



Science Fun

<https://www.sciencefun.org/kidszone/experiments/>

